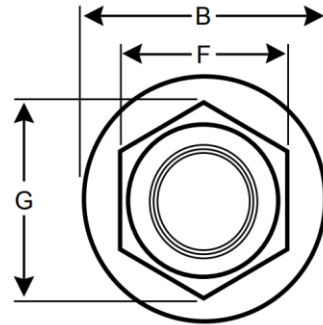
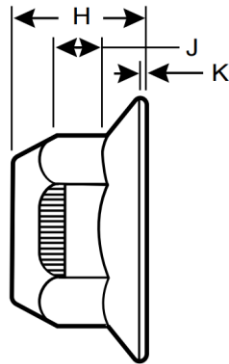




Grade G All Metal Hex Flange Top Lock Nuts

**DIMENSIONS**

IFI-100 / 107 Prevailing Torque Lock Nut- Cone Top

MATERIAL

IFI-100 / 107 Grade G - Grade 8 Equivalent

TENSILE STRENGTH

150,000 PSI Minimum

THREADING

ASME B1.1, UNC & UNF, Class 2B

LOCKING

Crimped or pressed top in order to displace threads to lock.

SIZE BOLT DIA	WIDTH A/F (F)		WIDTH A/C (G)	FLANGE DIAMETER (B)	
	MAX	MIN	MIN	MAX	MAX
1/4"	0.4385	0.428	0.488		0.560
5/16"	0.5020	0.489	0.557		0.680
3/8"	0.5645	0.551	0.628		0.810
7/16"	0.6895	0.675	0.768		0.930
1/2"	0.7520	0.736	0.840		1.070
5/8"	0.9395	0.922	1.051		1.330
3/4"	1.1270	1.088	1.240		1.585

SIZE BOLT DIA	FLANGE THICKNESS (K)	WRENCH HEIGHT (J)	NUT THICKNESS (H)	
	MIN	MIN	MAX	MIN
1/4"	0.040	0.14	0.300	0.265
5/16"	0.050	0.17	0.365	0.320
3/8"	0.060	0.20	0.425	0.404
7/16"	0.070	0.23	0.495	0.457
1/2"	0.080	0.26	0.555	0.528
5/8"	0.100	0.32	0.690	0.646
3/4"	0.110	0.38	0.825	0.742

This specification sheet is not intended to be used in the production of parts. Fast Flange is not liable or responsible for any production errors.